

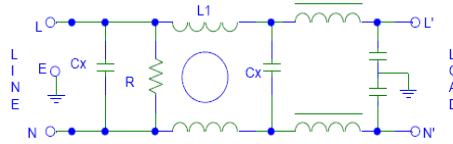


Features

- Superior performance
- Rated currents up to 50 A
- Medical versions available
- High conducted attenuation performance
- Screw Mount

Technical Specification

- Maximum Operating Voltage: 250 VAC
- Operating Frequency: 50/60Hz
- Rated Current: 1A to 50A
- High Potential test voltage:
L to G 2120VAC FOR 250V
L to L 1414VDC FOR 250V
- Overload Capability: 6 x Rated current for 8sec
- Temperature Range : -25 °C to 85 °C
- Earth Leakage Current : 1 mA max
(Also available in low leakage Current)



Application

- Power systems
- Electronic equipment
- Frequency convertors
- SMPS
- Elevators
- Power plants
- Escalator
- Dumbwaiters

Presentation

Nickel Plated metal case/Aluminium

Mounting

Screw Mount or Panel Mount

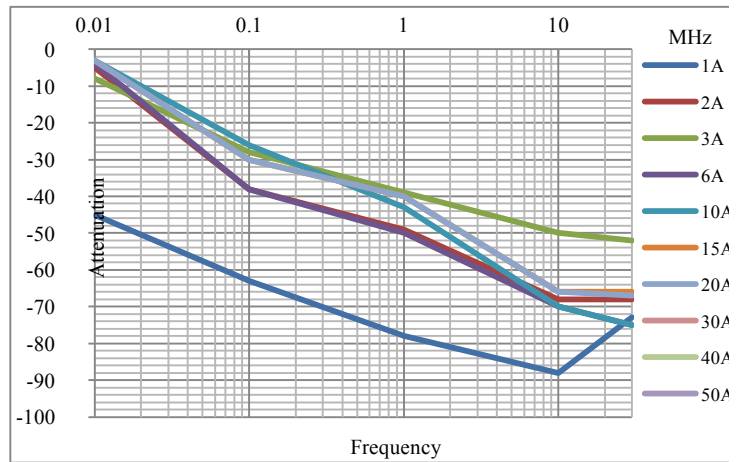
Termination

Fastons or Cable or Screw

How to Order

| Part No. | Rated Current (Amps) | Case | Termination |
|-----------|----------------------|--------------------|---------------|
| MF 430-01 | 1A | E | Fastons/Cable |
| MF 430-02 | 2A | E | Fastons/Cable |
| MF 430-03 | 3A | H2 | Fastons/Cable |
| MF 430-06 | 6A | H2 | Fastons/Cable |
| MF 430-10 | 10A | H | M5Screw/Cable |
| MF 430-15 | 15A | K2 | M5Screw/Cable |
| MF 430-20 | 20A | K2 | M5Screw/Cable |
| MF 430-30 | 30A | SX | M5Screw/Cable |
| MF 430-40 | 40A | SX | M5Screw/Cable |
| MF 430-50 | 50A | PX | M5Screw/Cable |

Insertion Loss



** For Customised filter Contact our sales department