

Features

- Superior performance
- Rated currents up to 50 A
- Medical versions available
- High conducted attenuation performance
- Screw Mount

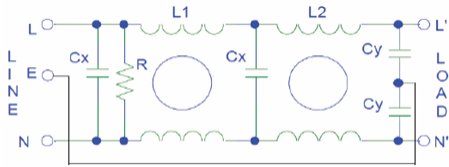


Application

- Power systems
- Electronic equipment
- Frequency convertors
- Stepper motors drives
- Ups
- Inverters

Technical Specification

- Maximum Operating Voltage: 250 VAC
- Operating Frequency: 50/60Hz
- Rated Current: 1A to 50A
- High Potential test voltage:
L to G 2120VDC FOR 250V
L to L 1414VDC FOR 250V
- Overload Capability: 6 x Rated current for 8sec
- Temperature Range : -25 °C to 85 °C
- Earth Leakage Current : 1 mA max
(Also available in low leakage Current)



Presentation

Nickel Plated metal case/Aluminium

Mounting

Screw Mount or Panel Mount

Termination

Fastons or Cable or Screw

How to Order

Part No.	Current Rating (Amps)	Case	Termination
MF 410	1A	E	Fastons/Cable
MF 410	2A	E	Fastons/Cable
MF 410	3A	H2	Fastons/Cable
MF 410	6A	H2	Fastons/Cable
MF 410	10A	H	M5Screw/Cable
MF 410	15A	K2	M5Screw/Cable
MF 410	20A	K2	M5Screw/Cable
MF 410	25A	SX	M5Screw/Cable
MF 410	30A	SX	M5Screw/Cable
MF 410	40A	SX	M5Screw/Cable
MF 410	50A	PX	M6Screw/Cable

** For Customised filter Contact our sales department

Insertion Loss

