

MF 300 SERIES



Features

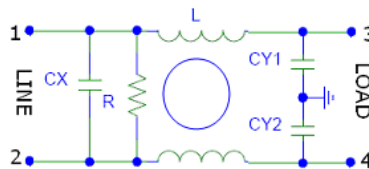
- Excellent performance/size ratio
- Rated currents up to 15 A
- Medical versions available
- High conducted attenuation performance

Application

- Integral IEC Connector
- All IEC Inlet Connector
- Medical application
- Computers
- Test and measurement equipment
- Portable electrical and electronic equipment
- Household equipment
- Rack mounting equipment

Technical Specification

- Maximum Operating Voltage: 250 VAC
- Operating Frequency: 50/60Hz
- Rated Current: 1A to 15 A
- High Potential test voltage:
L to G 2120VDC FOR 250V
L to L 1414VDC FOR 250V
- Overload Capability: 6 x Rated current for 8sec
- Temperature Range : -25 °C to 85 °C
- Earth Leakage Current : 1 mA max
(Also available in low leakage Current)



Presentation

Aluminium

Mounting

Screw Mount or Panel Mount

Termination

Fasten 6.3 X 0.8 mm

How to Order

| Part No. | Current Rating (Amps) | Leakage Current (mA) |
|-------------|-----------------------|----------------------|
| MF 300-01-X | 1A | <1mA |
| MF 300-02-X | 2A | <1mA |
| MF 300-03-X | 3A | <1mA |
| MF 300-06-X | 6A | <1mA |
| MF 300-10-X | 10A | <1mA |
| MF 300-15-X | 15A | <1mA |

** For Customised filter Contact our sales department

Insertion Loss

